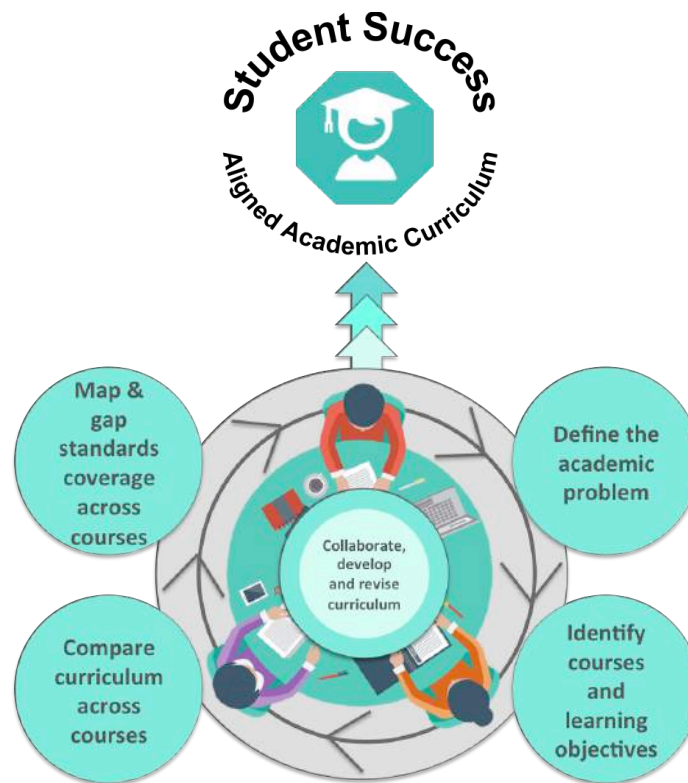


THE BRIDGE METHOD



The Bridge Method is a curriculum creation/revision and alignment program designed to empower and engage instructors in the processes of 1) incorporating standards into their curriculum using a quality syllabus format and 2) collaborating to map and gap standards coverage across a set of courses. **This attention to a connected process improves the quality and transparency of students' earned credentials and enhances the economic strength and on-the-job success of students earning a certificate or degree.**

The Bridge Method is housed within the Educational Policy Improvement Center's (EPIC) Bridge the Divide division. It employs a series of EPIC's signature, convergent-consensus methods refined and perfected over 15 years of work. EPIC aims to develop practical tools and techniques that support a dramatic improvement in college and career readiness for students.

The first step is for an educational institution (be it K-12 or higher education) to define their academic problem. That effort will organically lead to the identification of courses to be included in the alignment process and the appropriate standards/frameworks to use. At that point, the Bridge Method is primed to work with instructors, who will begin by reviewing, revising or developing curriculum to demonstrate coverage of the standards/framework. Comparing curriculum promotes collaborative mapping and gapping of standards across courses and across institutions to further refine a curriculum and/or pathway. **Embracing this collaborative process allows educators, students, and employers to know that critical competencies are continually taught, updated, and validated within a program.**

To accelerate and document the process for ongoing replication, the Bridge Method often uses EPIC-developed online software, **CourseCreate and CoursePathway**:

- **CourseCreate:** Instructors develop/revise course content in an online system that guides the syllabus development process using self-identification of curriculum to standards. Instructors can reuse and update course syllabi and administrators have syllabi in consistent formats.
- **CoursePathway:** Instructors and administrators create course sequences to identify coverage gaps and redundancies. Course and pathway reports visually demonstrate the absence or coverage of standards and support collaborative course revisions.

About EPIC

The Educational Policy Improvement Center (EPIC) is an innovative, nationally recognized, non-profit organization founded by Dr. David Conley, a pioneer in college and career readiness policy and research. EPIC conducts research and provides consulting services and systems to support educators in promoting college and career readiness and post-secondary success and completion.

Contact us for case studies of colleges and high schools successfully addressing alignment or visit our website for information and testimonials about EPIC's alignment work.

We'd love to talk with you about how the Bridge Method can help strengthen the quality, transparency, and connectivity of credentials.

For more information, go to <http://www.epiconline.org/what-we-do/bridge-the-divide/>

Or contact Kirsten L. Aspengren, EPIC Senior Director

kirsten_aspengren@epiconline.org

(541) 246-2600