

ETS Proficiency Profile Summary Report 2016

A total of 30 of 137 (21.9%) “Sophomore” students completed the ETS Proficiency Profile in the spring of 2016*. A sophomore was defined as having 45 or more credit hours, had not been enrolled at Sauk for more than three years, and if they were a transfer student to Sauk, they had taken at least 15 credit hours at SVCC.

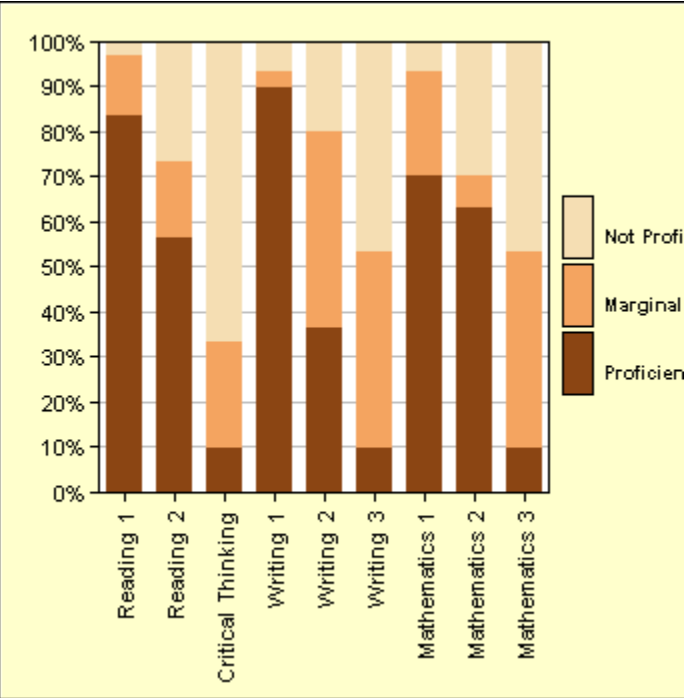
Students were given, as an incentive, a \$10 gift card, a drink, and a snack bar for taking the 40 minute test. Additionally, any student who performed better than the national mean score was given a chance to win an iPad Mini to provide extra incentive to work hard during the testing phase.

SVCC students did exceptionally well on the ETS Proficiency Profile averaging 454 on the composite score which ranked Sauk students at greater than 95th percentile in the nation. Additionally, Sauk did very well in the subcategories of critical thinking, reading, writing, and mathematics.

Table 1. Shows the combined statistics for the 30 students who completed the test.

	Possible Range	Mean Score	95% Confidence Limits* for Mean	Standard Deviation	25th Percentile	50th Percentile	75th Percentile
Total Score	400 to 500	454.53	451 to 458	18.36	440	454	470
Skills Subscores:							
Critical Thinking	100 to 130	112.27	110 to 114	6.15	107	113	117
Reading	100 to 130	121.50	119 to 124	6.43	116	124	126
Writing	100 to 130	116.53	115 to 118	4.41	115	116	119
Mathematics	100 to 130	116.53	115 to 118	6.23	111	118	122
Context-Based Subscores:							
Humanities	100 to 130	117.07	115 to 119	5.64	112	117	122
Social Sciences	100 to 130	114.67	112 to 117	5.97	110	114	119
Natural Sciences	100 to 130	116.87	115 to 119	4.57	112	116	120

Skill Dimension	Proficiency Classification		
	Proficient	Marginal	Not Proficient
Reading, Level 1	83%	13%	3%
Reading, Level 2	57%	17%	27%
Critical Thinking	10%	23%	67%
Writing, Level 1	90%	3%	7%
Writing, Level 2	37%	43%	20%
Writing, Level 3	10%	43%	47%
Mathematics, Level 1	70%	23%	7%
Mathematics, Level 2	63%	7%	30%
Mathematics, Level 3	10%	43%	47%



*Reports based on a sample of fewer than 50 test takers are representative of the performance of **that sample only**. Reports based on **fewer than 50 test takers** should not be considered representative of the larger group of like students, and inferences or generalizations about the larger population or subgroup **should not** be made based on such small samples.

Please contact the Office of Institutional Research if you have questions at 815-835-6263.